

Purchase requests through the web into your SAP® system

PROCESS DIRECTOR for Requisitions automates the generation of purchase requests – a process which otherwise is quite cumbersome in SAP standard.

With PROCESS DIRECTOR, you simply open up a requisition form, enter the details and send it off for approval in an electronic workflow. When the requisition has been approved, a purchase order is created, either automatically or manually by the purchasing department using PROCESS DIRECTOR.

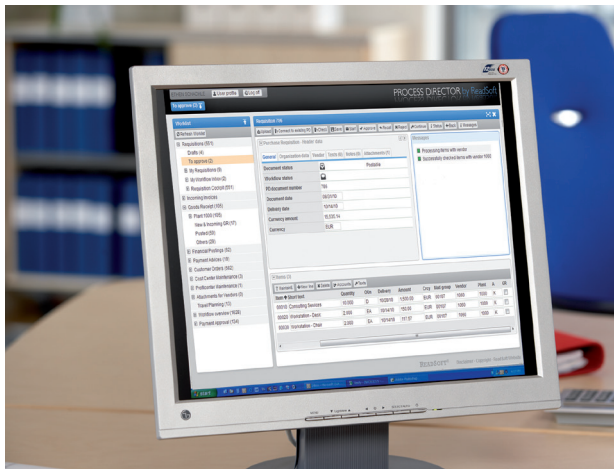
Use the same tool for requisitions and invoice approval

When the purchase order has been sent to your supplier of choice, it is easy to process the incoming invoice. PROCESS DIRECTOR integrates requisition handling and WEB CYCLE invoice approval in the same browser interface.

Thus, if your company is already using WEB CYCLE for invoice approval, your staff will be able to use PROCESS DIRECTOR both to create requisitions and approve invoices.

Work with a familiar interface

Besides the web appearance PROCESS DIRECTOR also comes with an SAP user interface, showing the same data as the PROCESS DIRECTOR Web Application. Select the one you are most familiar with and switch whenever you feel like a change in your work environment.



Enter your requisition's goods or services in a web browser and you have taken the first steps towards a finished purchase order.

With PROCESS DIRECTOR, you will:



Save money

Reduce costs for purchasing, logistics and accounting.



Improve control

With one single point of entry for creating all purchase requests you will move towards 100% Purchase Order based procurement.



Improve your purchase-to-pay process

By having a standardized and automated process for requisitions, you facilitate the subsequent steps in the purchase process, such as receiving goods and invoice processing. The combined savings of an efficient purchase-to-pay process really make a difference to your bottom line.



SAP® Certified
Powered by SAP NetWeaver®

Technical capabilities:

- One place to handle all requisitions throughout the organization.
- Can use OCI catalogs for easy item selection.
- Requisition handling and invoice approval in the same interface, either in a web browser or in the SAP GUI.
- Custom rules, checks, and determinations can be used and line item templates speed up repetitive data entry.
- Configurable worklist for easy separation and organization of documents.
- The solution is easily customized and configured according to your specific document flows. Perfect for shared service centers wanting to add on more processes over time.
- Reuse and optimization of existing SAP infrastructure means low total cost of ownership (TCO).

Business system integration

Works inside SAP with the familiar SAP look and feel. PROCESS DIRECTOR is strictly separated from the SAP standard and does not require any modifications in the SAP system (ABAP Add On).

PROCESS DIRECTOR I-I: Hard facts

ReadSoft SAP Products

- PROCESS DIRECTOR
- WORK CYCLE
- EDI COCKPIT
- WEB BOARD
- MOBILE APPROVAL
- INFO MAIL

PROCESS DIRECTOR runs inside SAP and comes with an SAP interface and web browser interface.

WORK CYCLE provides a workflow engine inside PROCESS DIRECTOR allowing you to easily bring the business process in front of the right people.

MOBILE APPROVAL brings AP invoice workflow onto the mobile device.

EDI COCKPIT is an electronic entrance for EDI enabled processes.



Graphical user interface localization

- Dutch
- English
- French
- German
- Spanish*

AP invoice handling is also available in these languages:

- Czech
- Hungarian
- Italian
- Japanese
- Polish
- Portuguese
- Romanian
- Russian*
- Simplified Chinese*
- Slovenian
- Swedish
- Turkish*

* From version 7

Relevant SAP releases

- SAP R/3 Release 4.6C
- SAP R/3 Enterprise 4.7
- SAP ECC 5.0 (also known as mySAP ERP 2004)
- SAP ERP 6.0 (also known as mySAP ERP 2005)

Web Application server requirements

Java versions

- Java Runtime 5
- Java Runtime 6

Web application server – 100% J2EE compatible with:

- Java Servlet 2.4
- Java Server Pages JSP 2.0
- SAP Java Connector (JCO 2.0.10 or later)

Recommended servers

- Apache Tomcat 5.5.x
- Apache Tomcat 6.0.x
- SAP NetWeaver Composition Environment 7.1 (using Java Application Server 7.1)

Recommended operating systems

- Microsoft Windows 2000
- Microsoft Windows XP
- Microsoft Windows 2003 Server

Processor speed

- 2.0 GHz or faster

Memory

- 1 GB RAM or more

For a high number of users working in parallel, we recommend a minimum of 2 GB RAM.

Hard drive

- 10 - 20 GB of free space

Related products

DOCUMENTS