

A control center for directing processes in your SAP® system

PROCESS DIRECTOR gives you a single platform for handling a wide range of different processes inside your SAP system.

The PROCESS DIRECTOR software platform can be easily adjusted to handle your specific processes and comes with pre-defined logic for directing document-driven and request-driven processes.

Document-driven processes

This means handling delivery notes, incoming sales orders, remittance advices, etc. PROCESS DIRECTOR works as a control center where you can process and approve incoming documents, no matter how they arrive.

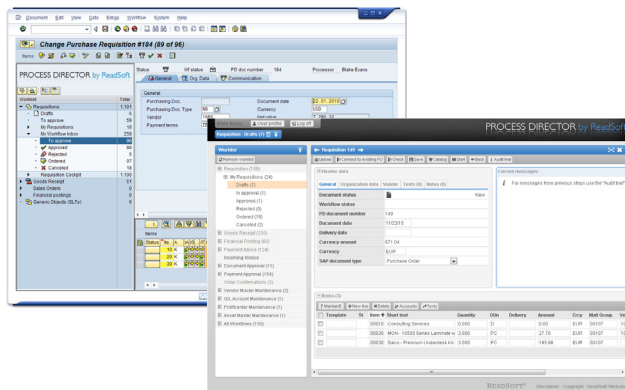
Request-driven processes

This means, for example, requisitions, requests for master data changes (vendor master, cost center master, etc.), and creation or changes to business data (like FI correction postings). With PROCESS DIRECTOR, you can enter these requests via a web browser and send them off to the correct persons for approval.

Work inside SAP

PROCESS DIRECTOR resides inside SAP. This means that you can work in your familiar SAP environment. It also means that entered information can be automatically matched against SAP master data or transactional data (like existing purchase orders).

If there are discrepancies between the information in PROCESS DIRECTOR and the data in SAP, the user is notified and can start investigating which information is correct.



Document approval can be handled both inside SAP and in a web browser.

With PROCESS DIRECTOR, you will:



Improve control

Better control over your information flow and early notification of errors.



Decrease costs and manual work

Easier to handle processes which can be quite cumbersome in SAP standard. Less staff is needed and focus can shift to more rewarding tasks such as process evaluations and follow-ups.



Shorten total processing time

Faster response times mean that you can improve relations with your business partners. This often results in improved relations and better deals.

To use the example of a sales order:

Let's say you sent your customer a quote for €1000. But on the order you get from the customer, it says €900. PROCESS DIRECTOR will notify you of this discrepancy and you can follow up on it. PROCESS DIRECTOR will also check that you have the ordered goods in stock (according to data in SAP).

Technical capabilities:

- Reuse and optimization of existing SAP infrastructure means low total cost of ownership (TCO).
- Single workflow tool for multiple processes.
- Document approval (workflow) is handled in a web interface or inside SAP.
- Archiving and linking of attachments such as a scanned image with any ArchiveLink-enabled content repository.
- Configurable worklist for easy separation and organization of documents.
- The solution is easily customized and configured according to your specific document flows. Perfect for shared service centers wanting to add on more processes over time.

Business system integration

Works inside SAP with the familiar SAP look and feel. PROCESS DIRECTOR is strictly separated from the SAP standard and does not require any modifications in the SAP system (ABAP Add On).



PROCESS DIRECTOR I-I: Hard facts

ReadSoft SAP Products

- PROCESS DIRECTOR
- WORK CYCLE
- EDI COCKPIT
- WEB BOARD
- MOBILE APPROVAL
- INFO MAIL

PROCESS DIRECTOR runs inside SAP and comes with an SAP interface and web browser interface.

WORK CYCLE provides a workflow engine inside PROCESS DIRECTOR allowing you to easily bring the business process in front of the right people.

MOBILE APPROVAL brings AP invoice workflow onto the mobile device.

EDI COCKPIT is an electronic entrance for EDI enabled processes.



Graphical user interface localization

- Dutch
- English
- French
- German
- Spanish*

AP invoice handling is also available in these languages:

- Czech
- Hungarian
- Italian
- Japanese
- Polish
- Portuguese
- Romanian
- Russian*
- Simplified Chinese*
- Slovenian
- Swedish
- Turkish*

* From version 7

Relevant SAP releases

- SAP R/3 Release 4.6C
- SAP R/3 Enterprise 4.7
- SAP ECC 5.0 (also known as mySAP ERP 2004)
- SAP ERP 6.0 (also known as mySAP ERP 2005)

Web Application server requirements

Java versions

- Java Runtime 5
- Java Runtime 6

Web application server – 100% J2EE compatible with:

- Java Servlet 2.4
- Java Server Pages JSP 2.0
- SAP Java Connector (JCO 2.0.10 or later)

Recommended servers

- Apache Tomcat 5.5.x
- Apache Tomcat 6.0.x
- SAP NetWeaver Composition Environment 7.1 (using Java Application Server 7.1)

Recommended operating systems

- Microsoft Windows 2000
- Microsoft Windows XP
- Microsoft Windows 2003 Server

Processor speed

- 2.0 GHz or faster

Memory

- 1 GB RAM or more

For a high number of users working in parallel, we recommend a minimum of 2 GB RAM.

Hard drive

- 10 - 20 GB of free space

Related products

DOCUMENTS